



**Passat Variant.**



**Volkswagen**

# Highlights.



## Car of the Year 2015

Europe's 'Car of the Year' award is one of the most prestigious in the world, and voting is done by journalists from 22 countries. The Passat emerged as the winner by a clear margin.



## Powerful TSI engine

The Passat Variant has a 2.0 TSI engine with 220 PS and 350 Nm of torque. It delivers smooth, effortless performance in all driving conditions, combined with class-leading fuel economy.



## LED headlamps

Compared to xenon headlamps, LED headlamps are more efficient and generate illumination that is similar to daylight. The LED daytime running lights also have a distinctive signature.



## LED tail lamps with light scenes

When braking, the horizontal light signature of the rear lamps switches to a vertically oriented brake light signature. This makes the brake lights more perceptible and increases safety.



## Dynamic Chassis Control (DCC)

The DCC system offers three suspension modes: 'Comfort', 'Normal' and 'Sport'. Every millisecond, the car computes and adaptively adjusts the optimal damping force for every situation.



## Touchscreen driver interface

Everything at your fingertips: the latest generation 'Discover Pro' system with its high-resolution 8.0-inch display features quick processing and an extremely user-friendly interface.



## ergoComfort seat

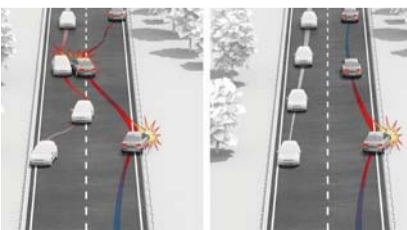
The ergoComfort driver's seat is electrically adjustable in 14 ways so you can find your most suitable posture with ease. It has won several awards from official spinal health associations.



## Active info display

The 12.3" Active Info Display, with its multiple information profiles, provides the right information in a clearly laid-out format directly in the driver's field of vision.

# Safety.



## Automatic post-collision braking system

This system automatically initiates braking after the car is involved in a collision. It minimises the severity of subsequent collisions, and allows the driver to steer the car to safety.



## Fatigue detection system

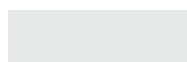
Many accidents occur due to driver inattentiveness. The fatigue detection system constantly analyses the driver's behaviour and recommends taking a break when tiredness is detected.

# Technical data.

Passat Variant 2.0 TSI (DSG)	
<b>Engine</b>	
Engine type	4-cylinder, TSI petrol engine with 16 valves, turbocharger
Capacity L / cc	2.0 / 1,984
Power PS / rpm	220 / 4,500 – 6,200
Torque Nm / rpm	350 / 1,500 – 4,400
Emission category	Euro 6
Gearbox	6-speed dual clutch automatic gearbox (DSG)
<b>Performance</b>	
Top speed km/h	244
Acceleration 0-100 km/h	6.9 sec
Driven wheels	Front
<b>Fuel consumption</b>	
Urban L/100km	8.1
Extra-urban L/100km	5.6
Combined cycle L/100km	6.5
CO <sub>2</sub> emissions g/km	152
Fuel capacity L	66
<b>Exterior dimensions</b>	
Length / width / height mm	4,767 / 1,832 / 1,477
Wheelbase mm	2,791
Track front / rear mm	1,584 / 1,568
Wheel size	8.0J x 19"
Tyre size	235/40 R19
Turning circle m	11.7



## Exterior colours.



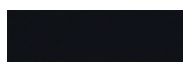
Pure White



Atlantic Blue Metallic



Black Oak Brown



Deep Black



Harvard Blue



Urano Grey



Reflex Silver



Manganese Grey Metallic



Pyrite Silver Metallic



Crimson Red<sup>^</sup>



Oryx White<sup>^</sup>

## Upholstery colours.



Titanium Black



St. Tropez



Marrakesh

<sup>^</sup>Special colours featured come at an additional cost.

Colours shown here are only a guide and may vary from actual colours. Volkswagen Singapore reserves the right to make changes to the design, specifications, colours and information contained herein without notice.

# Standard specification.

## Passat Variant R-Line

### Exterior equipment

Alloy wheels, 8.0J x 19", tyres 235/40 R19

LED headlights with cornering lights, separate LED daytime running lights

Automatic headlight activation, with 'Leaving Home' and 'Coming Home' functions

LED tail lamps

Front and rear fog lamp

Electrically operated tailgate

Electrically foldable, adjustable and heated exterior mirrors with memory function and auto dimming on driver side

Panoramic sunroof

Windshield, side and rear windows in heat-insulating glass

Electrically foldable, adjustable and heated exterior mirrors

R-Line body styling

Silver anodised roof rails

Lower side mouldings in chrome

### Interior equipment

'Climatronic' air conditioning system with 3-zone temperature control

'Nappa' leather upholstery

Electrically adjustable front seats

ergoComfort seat with memory and massage function for driver seat

Front center armrest with adjustable storage box

Asymmetrical split folding rear seat bench with center armrest

Glove compartment with cooling function

Active Info Display

Keyless Entry and Start-stop System (KESSY) including 'Press & Drive' starting function

Interior ambient lighting with LED entry lights for all doors

Leather-covered 3-spoke multi-function steering wheel

Steering wheel gearshift paddles

Height and reach adjustment for steering wheel

Leather gearshift knob

'Piano Black' inserts for dashboard and door trim panels

'Discover Pro' navigation system with 8 touch screen display, DVD player, 2 SD memory card slots

App-Connect smartphone connectivity, Bluetooth connectivity

'DYNAUDIO Confidence' exclusive sound system

Multimedia socket AUX-IN and USB interface

LED interior footwell lighting

LED reading lights in front and rear

Sun visors with illuminated vanity mirrors

Voice control

Head-up Display

Brushed aluminum inserts for dashboard and door trim panels

## Passat Variant R-Line

### Safety equipment

Airbags for driver and front passenger with front passenger airbag deactivation

Curtain airbag system for front and rear passengers including side airbags at the front

Electronic Stabilisation Programme (ESP) including Anti-Slip Regulator (ASR)

Safety-optimised front headrests and 3 rear headrests

3-point seat belts for all occupants

Rest Assist fatigue detection system

4 disc brakes, ventilated in front

Anti-theft alarm

Cruise control system

Dynamic Chassis Control (DCC) including driving profile selection

Electromechanical speed-sensitive power steering

Rain sensor

Electronic parking brake with Auto Hold

Park Distance Control (PDC) in front and rear

Area View

Rear view camera

Automatic dimming interior mirror

Front seat belt reminder warning signal and light

Electronically controlled Anti-Lock Braking System (ABS) and brake assistant

Electronic Differential Lock (EDL) and Engine Drag Torque Control (EDTC)

Tyre pressure monitoring system

Warning triangle

Tyre mobility set

# Aftersales.

Here at Volkswagen, you can be assured of our service quality. We deliver as promised!



## Express Friday.

Get standard 15,000km and 30,000km servicing done in under 3 hours.\*



## Service Appointment Promise.

Our promise to you – a service confirmation date within 3 working days\*, or enjoy a complimentary vehicle pick-up and delivery service.



## Online Service Booking.

Convenience at your fingertips with online service bookings at [aftersales.vw.com.sg](http://aftersales.vw.com.sg).



## Volkswagen Warranty

- 5-year or 100,000km warranty (whichever is earlier)
- 24-hour Volkswagen Roadside Assistance
- 12-year body protection warranty\*
- 5-year paintwork warranty

Warranty terms and conditions apply: [www.vw.com.sg/warranty](http://www.vw.com.sg/warranty).

\* Available at any Volkswagen Centre Singapore.

^ Excluding repair work.

\* Applicable only for erosion from inside of vehicle.

### Volkswagen Centre Singapore

247 Alexandra Road  
Singapore 159934  
Tel: 6474 8288

### Das WeltAuto

1 Kampong Ampat  
Singapore 368314  
Tel: 6496 6488

### Light Commercial Vehicles

1 Kampong Ampat  
Singapore 368314  
Tel: 6922 3500

### Services

Aftersales service hotline: 6305 7299  
Aftersales service fax: 6474 3643  
24-Hr Roadside Assistance: 6333 8800

### Service enquiry email

[service@vw.com.sg](mailto:service@vw.com.sg)

[www.vw.com.sg](http://www.vw.com.sg)

Subject to changes without notice.  
Printed in Singapore.  
Issue: December 2017



Scan to find out more about the Passat Variant.